

Skywagon Fly-In Biel-Kappelen LSZP

28-29 August 2021



Crew Guide

Contents

1. Welcome
2. General information
3. Timetable
4. Airfield Biel-Kappelen LSZP
5. Alternate airports
6. Technical support
7. Emergency
8. Local regulations
9. Situation plan
10. Important telephone, email and Homepage

1. Welcome

Dear Skywagon Crews

The 1. Skywagon Fly-In Switzerland welcomes you in Biel-Kappelen. It is a great honour for us to host you as our guest for this event in our beautiful "3 Lake Region".

We try to keep the paperwork as simple as possible, therefore you can find the most important firsthand information for the participation in this guide. If you have any questions, please do not hesitate to send a mail to the responsible organisator Paul Misteli +41 79 136 28 39 misteli.p@bluewin.ch

Dear participants, I am glad to have you with us on a remarkable flying event and I thank you very much for your efforts to a safe flight operation.

Paul Misteli, Head of Aerodrome Biel-Kappelen LSZP

2. General Informations

Customs on request

If you need customs, please fill the form minimum 2 ½ hour before arrival at LSZP or 1 ½ Hour before departure in LSZP:

<https://zollairport.ch/Fluganmeldung/ZollAnmeldung/ZollForm.php?ad=LSZP&la=DE>

Flightplan

Do not forget to close your flightplan: In the air by Zürich Information 124.700 or Geneva Information 126.350, or by phone +41 43 931 61 61 after landing.

Arrival

Saturday strictly no take off from 1200 till 1300 LT ! landing always possible

Sunday strictly no take off from 1200 till 1330 LT ! landing always possible

No landing fees for the participating aircrafts

Your aircraft parking position will be given by our ground crew (yellow jackets)

On Arrival

Contact the PILOT'S Welcome Desk next to the restaurant - where you will receive actual information and an envelope containing:

- Participant passes
- Information on accommodation (if applicable)
- Information on transportation (airfield site – hotel)
- Information on flight program schedule

Briefing

The attendance of the briefing given by the Head of Aerodrome is mandatory for all participating pilots for the Air-to-Air photo shooting and for the flying parade.

Food and Beverage - Restroom

We have a nice little Restaurant on site. Various drinks and food can be ordered at your costs. Restrooms are available on site.

Accommodations

According your registration we will reserve hotel rooms for you and your crew at the Airport Hotel in Grenchen. We have negotiated special prices for the rooms. (Single room CHF 105. Double room CHF 155. Breakfast buffet included).

Transfer to/from the Hotel

We will take you to the hotel, to the barbeque event and back by bus. Please be on time at the meeting point.

Barbeque event saturday evening

We are very happy to invite you to a barbeque on our family farmhouse. Food and drinks are offered by our family.

C-Office

Our C-Office is situated in a container near the children playground. Computer with internet is available for your flight planning.

Departure

On your flight back home you can open your flight plan after take off with a call to Zürich information 124.700 or when you fly westbound with Geneva Information 126.350.

3. Timetable – provisional program (all times are local time)

Saturday

From 09.00	Skywagon arrivals and welcome to the participants
11.30	Briefing for the afternoon Air-to-Air flight (main building first floor)
12.00 – 13.00	Lunch
12.00 – 13.00	No take off allowed during this time

14.00 – 15.00	Fly-out in the region and Air-to-Air photo shooting according the briefing
17.00	Meeting point at the airfield car parking for the transfer to the hotel
17.00 – 17.15	Transfer by bus to the hotel airport in Grenchen and check-In
18.15	Meeting point at the hotel car parking for the evening event.
18.15 – 18.30	Transfer by bus to Edith&Paul Misteli's farmhouse in Aetigkofen
18.30	Welcome speech and drinks
19.00	Surprise
19.30 – 23.00	Barbecue – Drinks and food – Fun
Approx. 23.00	Transfer by bus to the hotel airport in Grenchen

Sunday

From 09.00	Skywagon arrivals and welcome to the new participants
09.30	Meeting point at the hotel car parking for transfer to the airfield
09.30 – 09.45	Transfer by bus to the airfield
11.45	Briefing for the afternoon flying parade (main building first floor)
12.00 – 13.30	Lunch and music
12.00 – 13.30	No take off allowed during this time
14.00 - 1430	Flying parade over the airfield
16.00	Departure to the different homebases

4. Airfield Biel-Kappelen LSZP

Be careful our airfield is located below the TMA of Bern Airport LSZB (Airspace D above 3'500 ft AMSL), stay below or call 127.325 to enter. In the near eastbound the CTR of Grenchen LSZG, to enter call 120.105. Westbound the CTR of the military airbase of Payerne, to enter call 128.675.

Quick reference

AD LSZP Biel-Kappelen

ELEV 1437ft AMSL

RWY 05 – AVBL LEN LDG 560m – AVBL LEN TKOF 445m - Grass

RWY 23 – AVBL LEN LDG 445m – AVBL LEN TKOF 560m – Grass

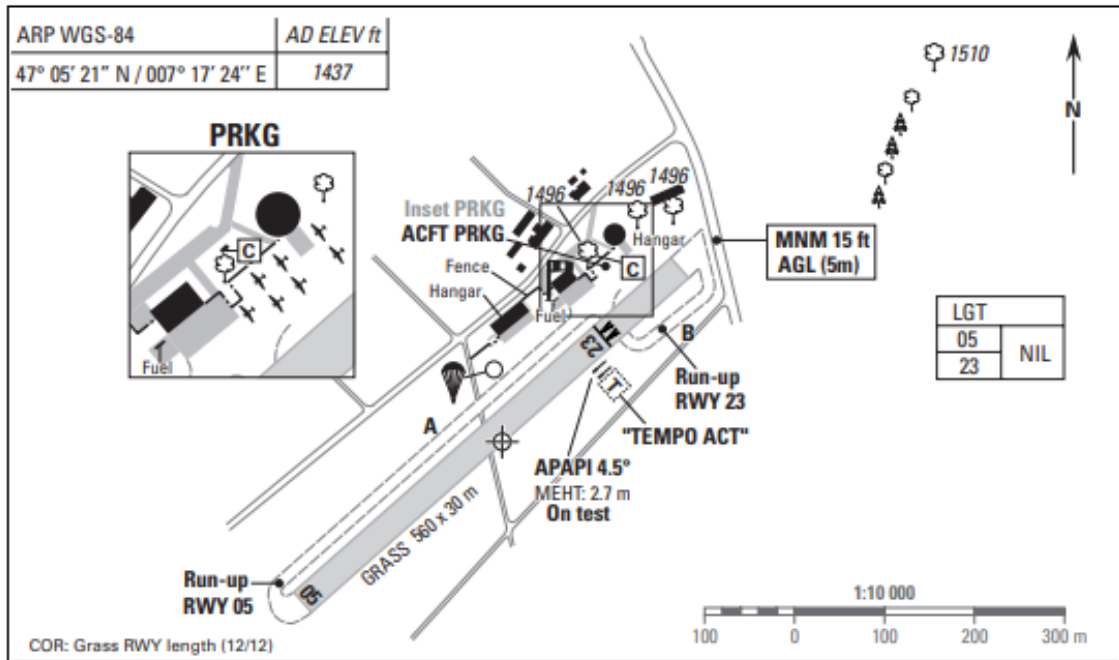
Radio Kappelen Airfield 123.155 – only blindcalls – no tower

OPR hours:

MON – SAT SR – HRH, no take off 12.00 – 13.00 LOC TIME

SUN 0900 – HRH, no take off 12.00 – 13.30 LOC TIME

Parachute operations on site. Please be carefull and do not make an overhead approach. Listen 123.155 5' prior to land and make blindcalls on radio 123.155. When the red flashing light on top on the hangar west is ON (meaning parachutist are in the air), **no taxi on the taxiway** – backtrack on runway is possible during the red flashing light is ON.



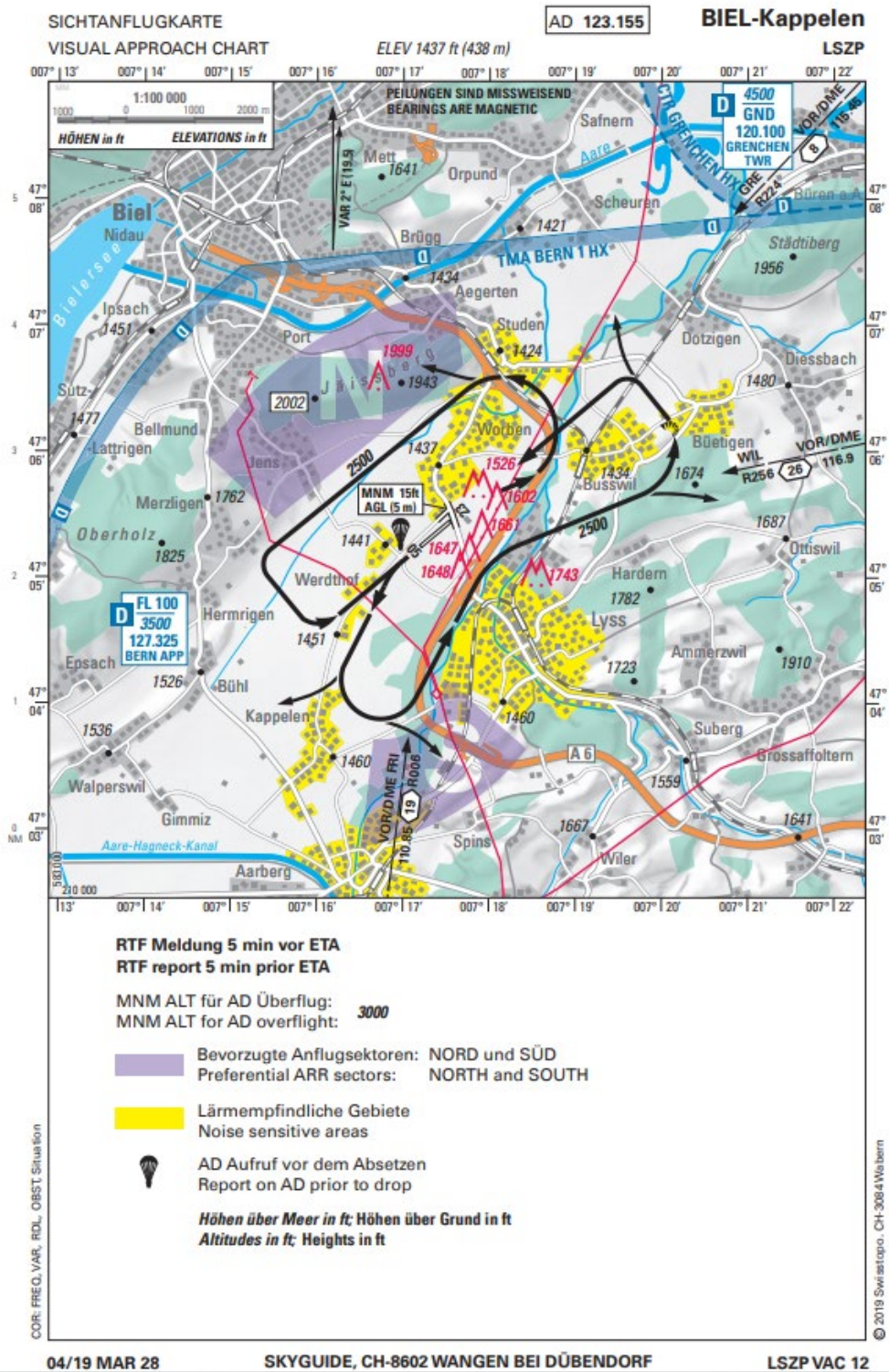
NR	RWY BRG TRUE/MAG	m	AVBL LEN LDG	AVBL LEN TKOF	Oberfläche SFC	Tragfähigkeit STRENGTH
05	047/044	560 x 30	560	445	GRASS	0.25 MPa
23	227/224		445	560		
VAR (20.5): 3° E			→ VFR AGA 3-0, § 3			→ VFR AGA 3-0, § 2

1 Flugplatz:
Privat, Flugfeld, **PPR**

1 Aerodrome:
Private, Airfield, **PPR**

2 Lage:
7 km SW Biél

2 Location:
3.8 NM SW Biél



Noise sensitive areas

Do not overfly the villages near our airfield. We are in a noise sensitive area, please fly the circuits as exact as possible. Circuits are flown at 2'500ft AMSL

5. Alternate Airport

Grenchen LSZG

AD LSZG Grenchen

ELEV 1411ft AMSL

RWY 06 – AVBL LEN LDG 865m – AVBL LEN TKOF 995m - Concrete

RWY 24 – AVBL LEN LDG 1000m – AVBL LEN TKOF 865m – Concrete

RWY 06 R – AVBL LEN LDG 618m – AVBL LEN TKOF 640m - Concrete

RWY 24 L – AVBL LEN LDG 640m – AVBL LEN TKOF 618m – Concrete

ATIS Grenchen 121.105

Tower Grenchen 120.105

6. Technical Support (LSZP)

Piston engine fuel AVGAS 100LL – payable only with credit cards – no cash

Piston engine fuel UL91 - payable only with credit cards – no cash

Engine oil on request

Power supply 12V and 24V available

No hangar space available

7. Emergency

For prepared emergencies requiring a longer runway, Grenchen (LSZG) will be within 8 NM distance.

Fire fighting

We only have handheld fire extinguisher located at the fuel station and in each hangar. For fire brigade call 118.

Ambulance / first aid

Rescue teams with medical and first aid facilities are available under the number 144 or 032 324 24 24. Rescue helicopters of the Swiss Air Ambulance REGA are available on telephone number 1414. Emergency hospitals are located in the city of Biel and Aarberg.

8. Local regulations

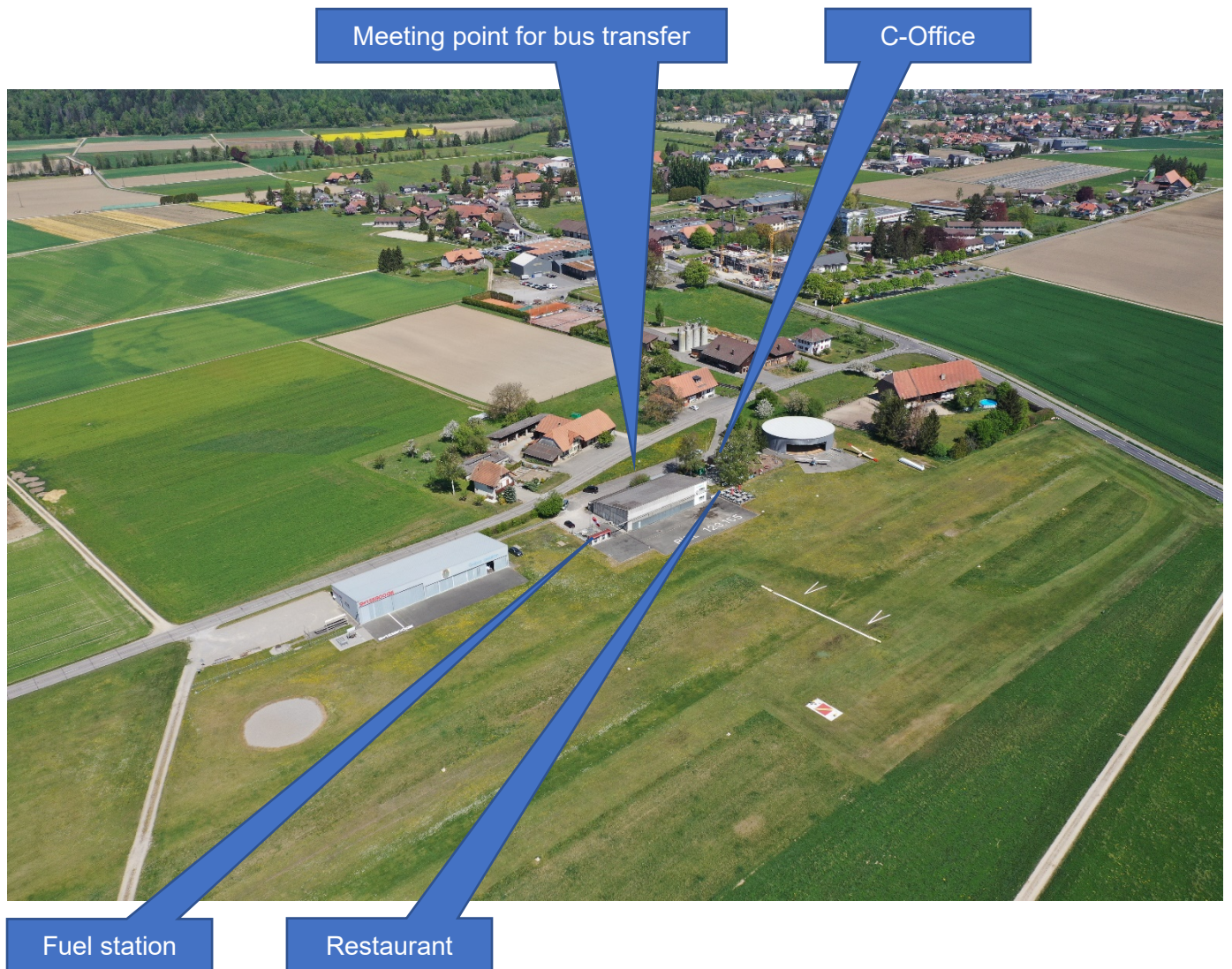
General

During flight OPS, SAFETY is paramount. Overflying of built up areas and villages in the vicinity of the airfield (yellow areas) have to be avoided whenever possible. Please reduce power as soon as practical after reaching safe altitude.

Briefing

A briefing will be given by the Head of Aerodrome on each day of the fly-in. Its attendance is mandatory for each participating pilot. Noncompliance will automatically ban the respective pilot from participation of the Air-to-Air photography and the flying parade.

9. Situation plan



10. Important telephone, email and homepage

Organisator and Head of Aerodrome Paul Misteli +41 79 136 28 39 misteli.p@bluewin.ch

Deputy organisator Nicolas Misteli +41 79 828 83 42

Homepage airfield Biel-Kappelen LSZP www.lszp.ch

Skyguide OPS Zürich (close your flightplan by phone) +41 43 931 61 61 www.skyguide.com

Hotel Airport Grenchen +41 32 654 70 70 www.airporthotel.ch